



ChangeLab Solutions



*Accountable Communities
of Health:
Principles of Sound
Governance*

*Presented by:
Keith Nagayama, JD*

ChangeLab Solutions

Healthier communities for all through better laws and policies.



DISCLAIMER

The information provided in this discussion is for informational purposes only, and does not constitute legal advice. ChangeLab Solutions does not enter into attorney-client relationships.

ChangeLab Solutions is a non-partisan, nonprofit organization that educates and informs the public through objective, non-partisan analysis, study, and/or research. The primary purpose of this discussion is to address legal and/or policy options to improve public health. There is no intent to reflect a view on specific legislation.

© 2016 ChangeLab Solutions

Session Overview

Structure and Basic Elements

Guiding Principles

Governance

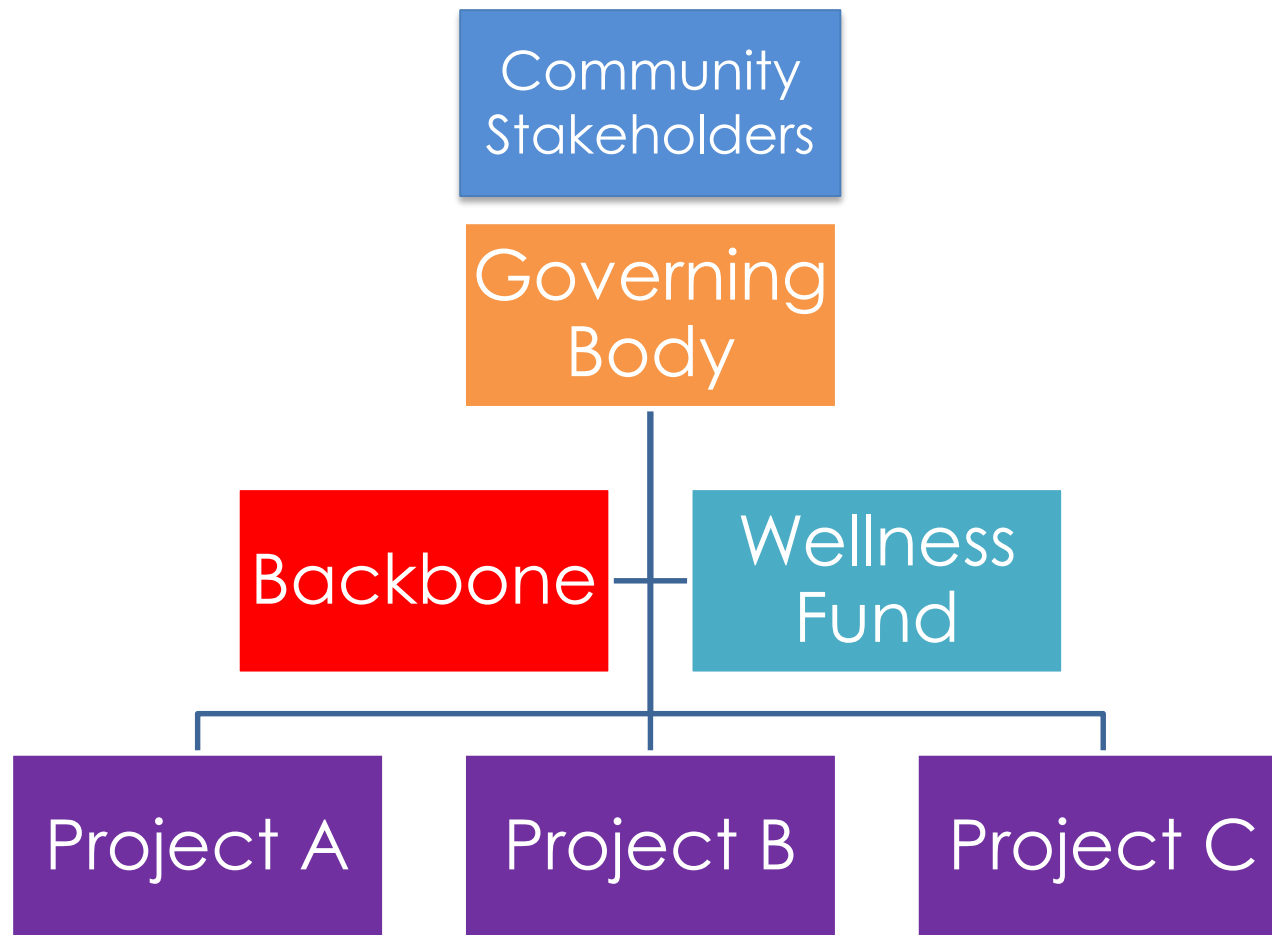
Considerations for Structure

Primary Questions

What is your proposed Governance Structure OR Process for developing governance structure and agreements?

If the Backbone entity is different from the lead Applicant, describe the relationship between the two?

How does the Wellness Fund fit into the ACH structure and with the Backbone?



Basic ACH Structure
Government Perspective

Guiding *Principles*

- Accountability
- Neutrality
- Flexibility
- Sound governance



Accountability



Neutrality



Flexibility

- **Accountability**
 - Representation
 - Rules (i.e. Bylaws)
 - Discussion
 - Transparency
- **Fiduciary Duties**
 - Duty of Care
 - Duty of Loyalty
 - Duty of Purpose
- **Control & Procedures**
- **Managing Conflicts of Interest**

Sound Governance

Decision-Making: *Some Key Questions*

Size of the Governing Body

Are sectors/community members represented?

Can decisions be made (i.e. forward)?

Is there enough time for discussion?

Decision-Making

How many votes are needed to make a decision

Are members of the governing body participating?

For disagreements, is there a neutral facilitator?

How often are meetings?

Is there enough information available?

Conflicts of Interest

What is the policy and procedure for identifying and vetting conflicts?

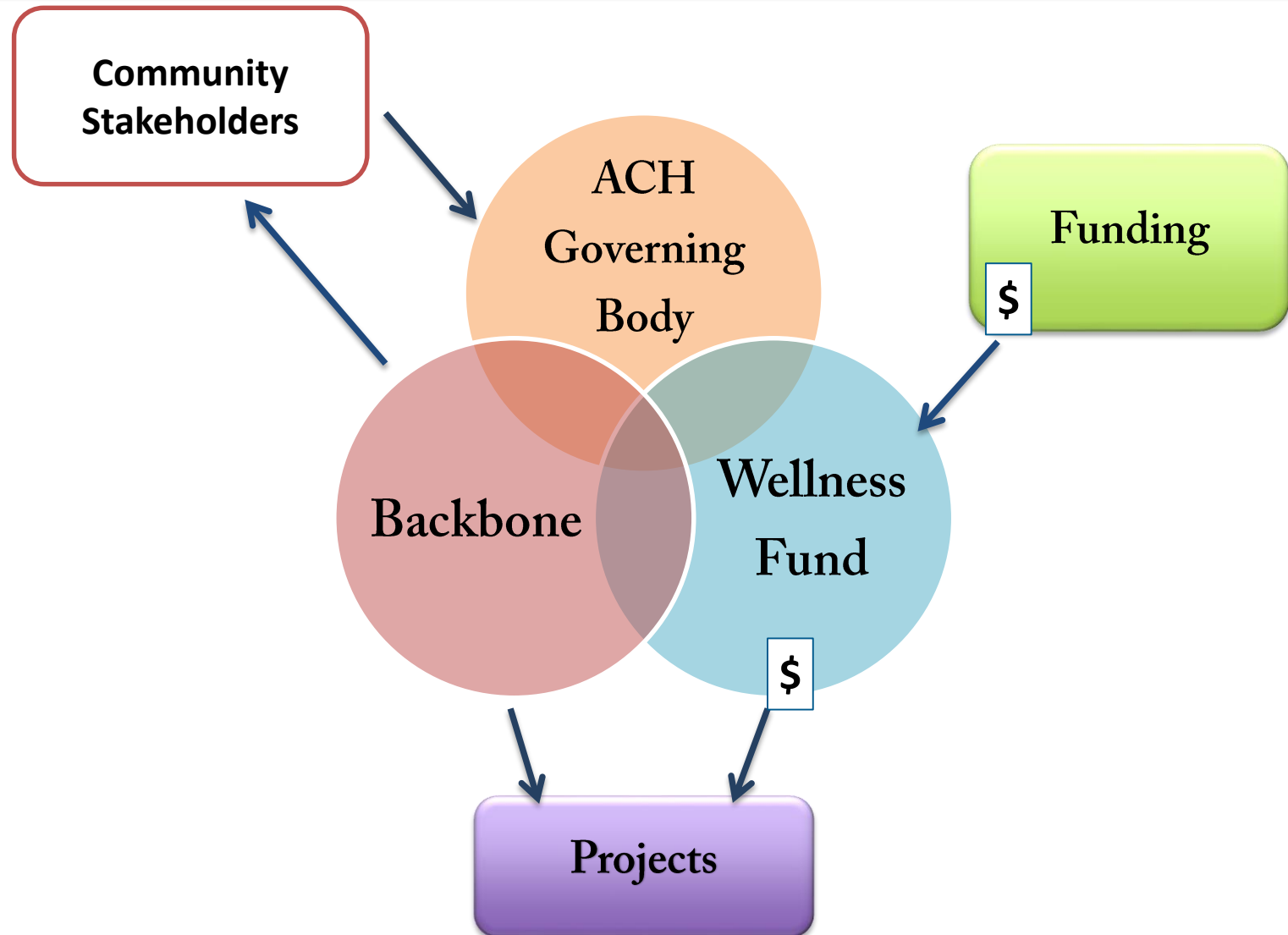
Single v. Multiple *Organizations*

Consider the Pros and Cons

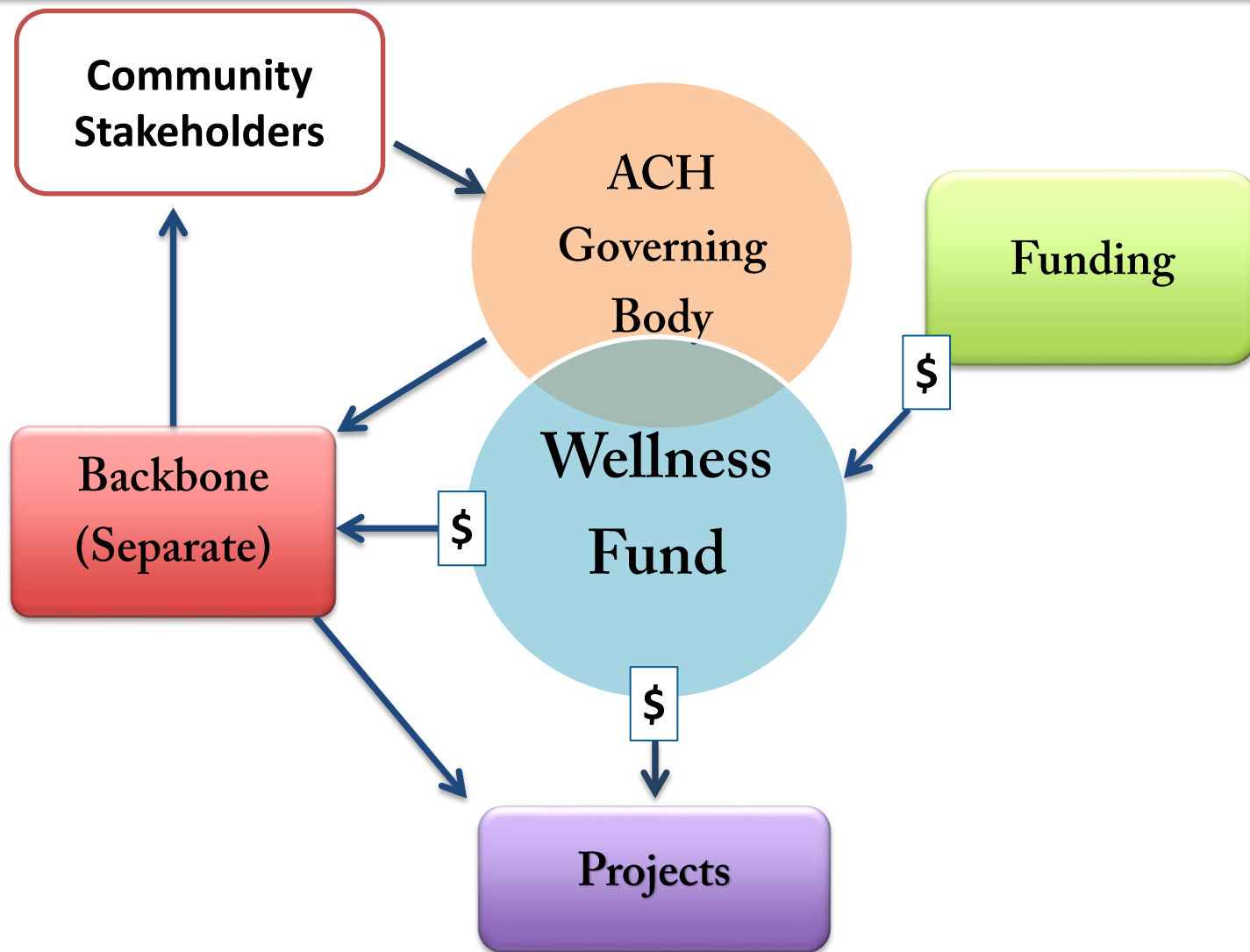
For a single organization, assess the capability to manage both backbone and wellness fund functions

For multiple organizations, assess the relationships and agreements

ACH Structure: Single Backbone/Wellness Fund



ACH Structure: Two Organizations

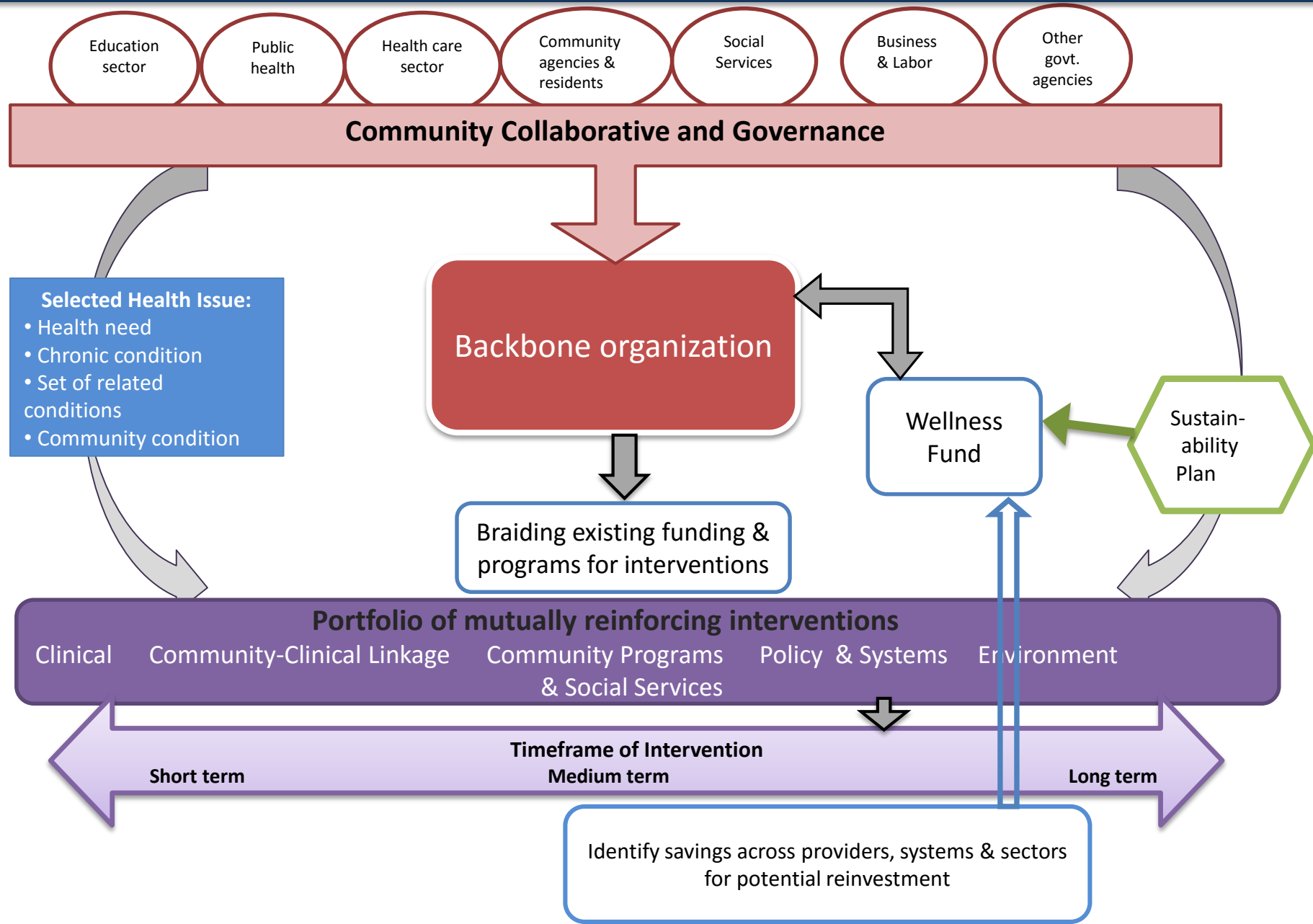


Nonprofit v. Government

For the roles of ACH, Backbone and/or Wellness Fund:

- Assess the Existing Organizations within Your Community
- Capability of Meeting the Guiding Principles
- Consider the Strengths and Weaknesses

Accountable Community for Health





ChangeLab Solutions



Thank you!

ChangeLabSolutions.Org

California Accountable Communities for Health Initiative

TIMELINE

Jan 22:
Release of
RFP

Apr 29:
Proposals
due

May:
Site Visits

**mid-
June:**
Selections
announced

July 1:
Start Date
for Grants

California Accountable Communities for Health Initiative

Questions

Barbara Masters, Project Manager
and
Keith Nagayama, Senior Counsel
ChangeLab Solutions

California Accountable Communities for Health Initiative

For more information, please visit:

www.CommunityPartners.org/CACHI

Please direct inquiries to:

Barbara Masters, Project Manager

CACHImgr@CommunityPartners.org