

California Accountable Communities for Health Initiative

Welcome!

We'll be starting shortly

California Accountable Communities for Health Initiative

Principles of Sound Governance

March 23

3:30 pm

California Accountable Communities for Health Initiative

Welcome and Overview

Linda Fowells

Executive Vice President

Community Partners

Housekeeping

- **Call in** using the toll-free number, access code, and pin provided to you in the confirmation email, **OR** follow the instructions in the “audio” panel on your screen.
- All participants are **currently on mute**.
- You can **submit questions and comments** using the question box in the webinar panel on your screen.
- **Yes, this webinar is being recorded**. A link to the recording and the presentation will be available on the website tomorrow.

California Accountable Communities for Health Initiative

GOALS for WEBINAR



Accountable Communities for Health:
Review of Key Definitions



Principles of Sound Governance



Options for ACH Structure

California Accountable Communities for Health Initiative

Presentation

Barbara Masters, Project Manager
and
Keith Nagayama, Senior Counsel
ChangeLab Solutions

California Accountable Communities for Health Initiative

An Accountable Community for Health is a multi-payer, multi-sector alliance of major health care systems, providers, and health plans, along with public health, key community and social services organizations, schools, and other partners serving a particular geographic area.

An ACH is responsible for improving the health of the entire community, with particular attention to achieving greater health equity among its residents.

California Accountable Communities for Health Initiative

Initiative Partners

blue  of california
foundation

Blue Shield of California Foundation is an independent licensee of the Blue Shield Association

 KAISER PERMANENTE®

 The
California
Endowment


California Health & Human Services Agency

 *Community*
PARTNERS®



Shared
vision and
goals



Partner-
ships



Leadership



Backbone
organi-
zation



Data
analytics
and
sharing
capacity



Wellness
Fund



Portfolio
of inter-
ventions

Definitional Elements



Backbone organization

- Facilitator and convener
- Provides overall guidance in support of vision and strategy
- Mobilizes funding



Wellness Fund

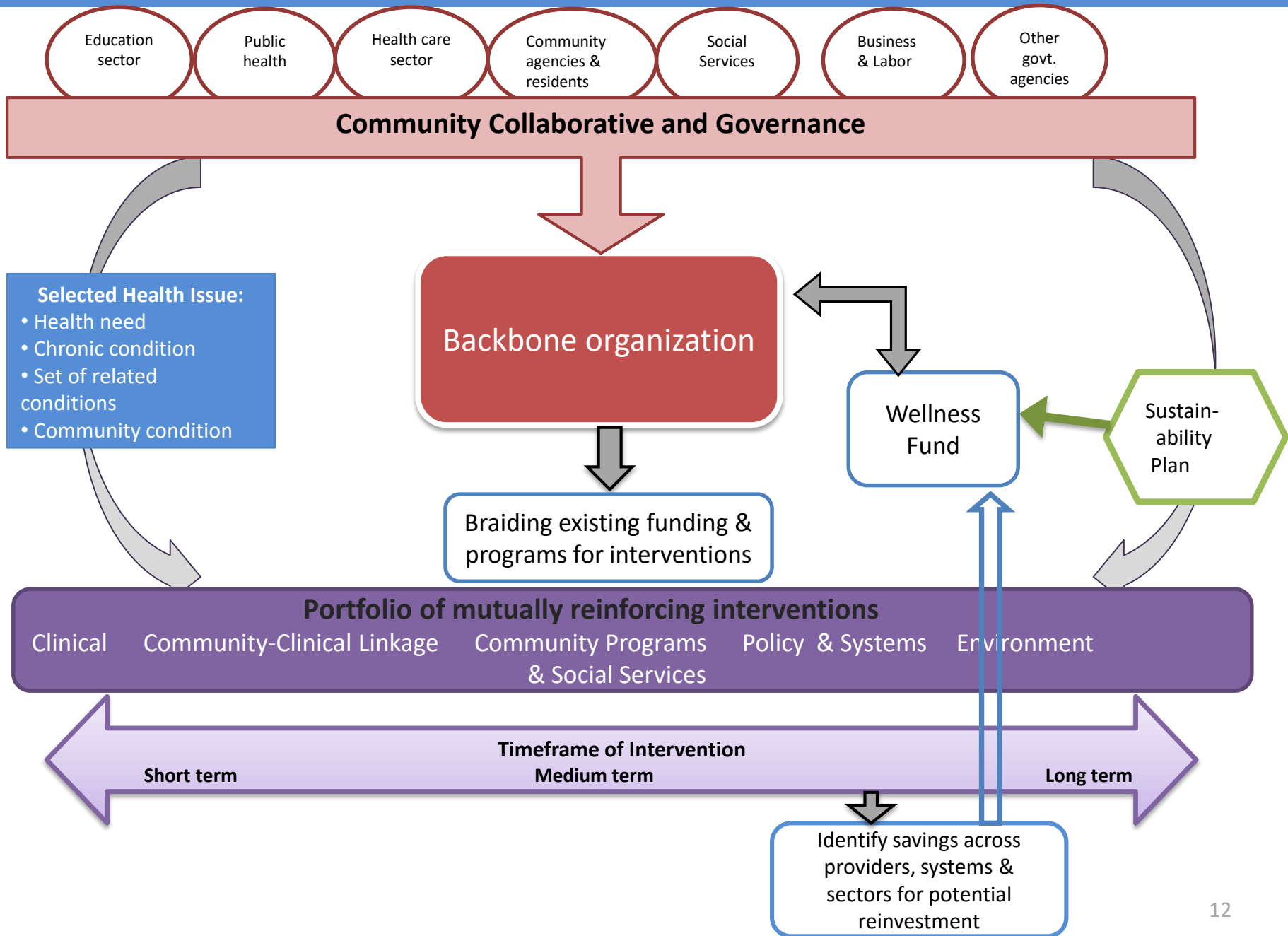
- Vehicle for attracting resources
- Support the ACH infrastructure, including Backbone functions, and interventions for which few resources exist and are prioritized by the ACH

Lead Applicant

- Able to fulfill the fiscal and administrative responsibilities, e.g., contracting capacity
- Trusted by the ACH partners
- Non-profit or government entity
- May or may not be the Backbone
- Reminder: Connect with interested partners:

<http://www.communitypartners.org/cachi-participant-directory>

Accountable Community for Health



Accountable Community for Health: Structural Elements

